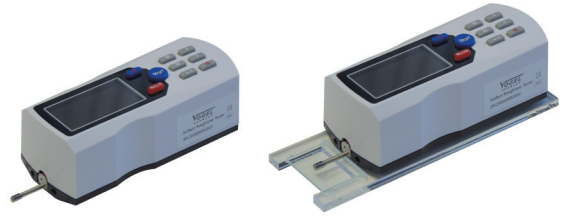


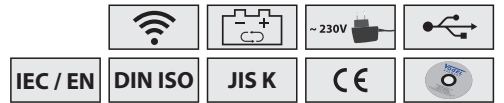
# Electr. Digital Surface Roughness Tester

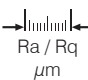

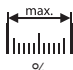
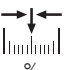

- high performance device, for professional demand
- for measurement of roughness parameters
- Rz, Ra, Rq, Ry, Rt, Rv, R3z, R3y, RzJIS, Rsk, Rku, Rsm, Rmr with USB 2.0 data output

- rugged ABS plastic housing, in ergonomic design
- large OLED display with clear reading and with backlight
- comprehensive information and graphic representations
- diamond tracer tip, 90°, radius 5 µm, contact power 4 mN (0.4 gf)
- standard acc. to ISO, DIN, ANSI, JIS
- digital filter RC, PCRC, Gauss, D-T13565, data memory 2 MB + 2 GB
- with built-in and rechargeable Li-Ion battery, charger 100 – 240 V / 50/60 Hz
- up to 10 hrs. permanent use, with calendar and RTC
- On/Off button, autom. power off, battery indicator
- selectable languages: english, german, chinese
- reliable software for the electrical motor drive
- connection to PC or printer, incl. interface cable
- incl. software, ground plate, calibration test block, standard tracer (art.-no.: 657210), with operation manual



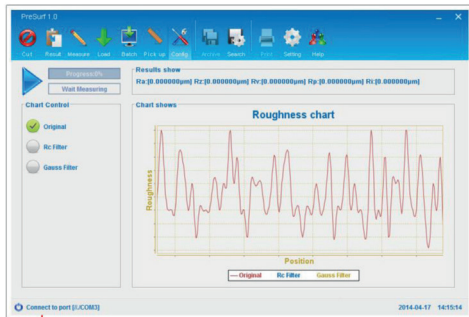
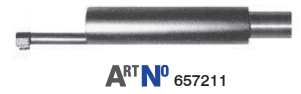
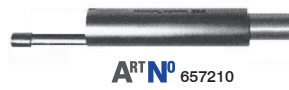
extensive information and graphic representations



ART <sup>N</sup> <sub>0</sub>	 Ra / Rq µm	 Rq/Rt/Rp/Rv/R3z/R3y/ RzJIS/Rsk/Rku/Rsm/Rmr µm	 max. %	 cut-off length mm	cut-off length mm	 mm
657113	Ra 0.005 – 16 / 0.02 – 160	±0.6 %	< ±10	< 6	0.25 / 0.8 / 2.5	140 x 55 x 47

## Accessories for art.-no. 657113

- art.-no. 657210 tracer, straight (standard)
- art.-no. 657211 tracer, angled
- art.-no. 657212 tracer, for ø 3 mm bore depth
- art.-no. 657213 tracer, for ø 10 mm bore depth
- art.-no. 657214 Ra test block
- art.-no. 657218 stand
- art.-no. 657219 PC software for wireless data transfer



Example for a wireless transmission

ART<sup>N</sup><sub>0</sub> 657218

