



TECHNICAL SPECIFICATION :

Model	DWL 680 Pro
Type	Waterproof
Measurement range (Single Axis)	0° ~ 90°; 4 x 90° (360°)
Measurement range (Dual Axis)	--
Resolution	0.1° (1.75 mm/M)
Accuracy	0.1°
(°) Degree, % slope	●
in/Ft, mm/M	●
Dual Axis XY measurement	--
Buzzer sound	●
HOLD function to freeze reading	●
Built in vials	●
Magnet	●
Backlight	OLED
Alternate Zero (Set any angle to 0)	●
Inverted reading display	●
Auto shut off (Power saving)	●
User self calibration	●
Dimension** L x H x W (mm)	600 x 60 x 27
Operating temp.	-20° ~ +60° (Celcius)
Storage temp.	-30° ~ +70° (Celcius)
Waterproof rating	IP65
Batteries	3 x AAA

Note : * Product Specification and appearance are subjected to change for product improvement without prior notice.

** Dimension stated in this chart is approximation.

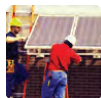
Blank Space - indicate this feature is not available for this model.

Dot "●" - indicate this feature is available for this model.

Applications :



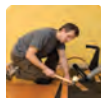
Roof contractor



Solar Modules Installation



Offshore & Shipyard



Home & DIY Work



Satellite Dish Alignment



Steel-Beam Structure Alignment



Window Frame Installation